

Planta Segunda y Solárium

Biq 02 Nº 36

Superficies (m2)

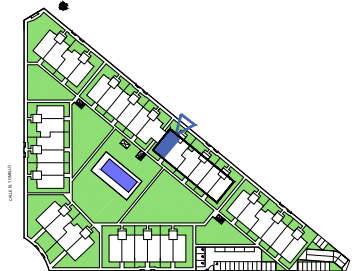
Vivienda 75,85 *
 Terraza 10,16
 Balcón 1,90
 Trastero 1,50

Total_ 89,41
Solárium _ 67,32

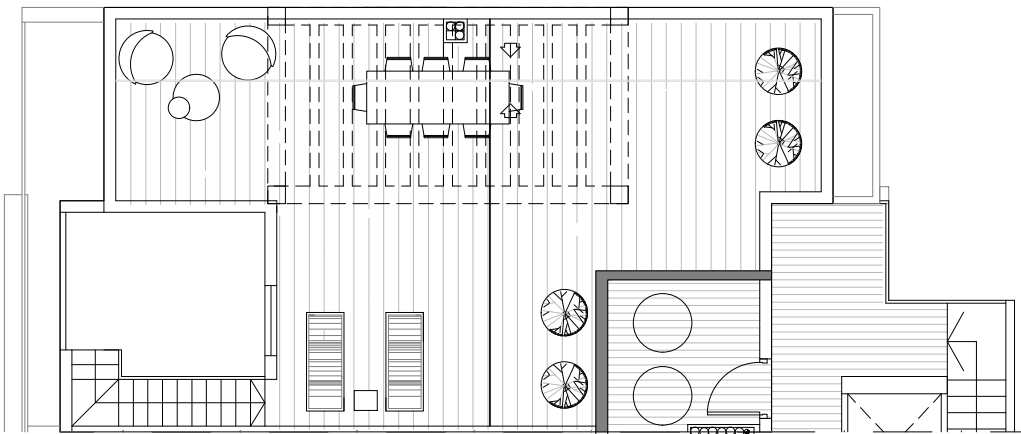
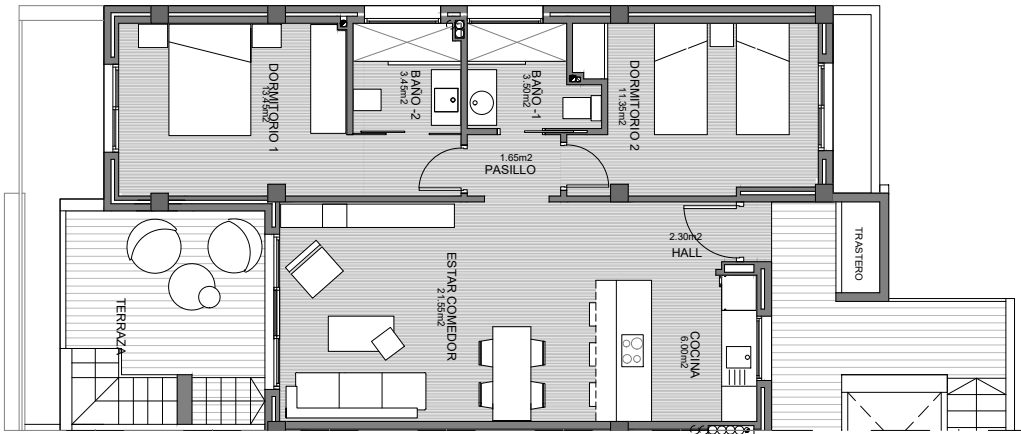
Sup. construidas *

2 dormitorios
 2 baños

Norte



0 1.0 m. 2.0 m. 3.0 m.



Guardamar Del Segura (Alicante)
 Parcela ZR-44_Sector Z0-4