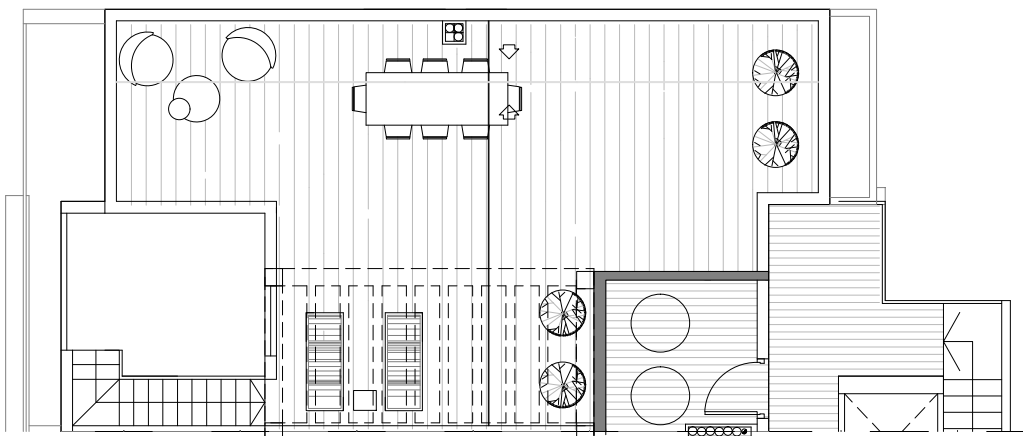
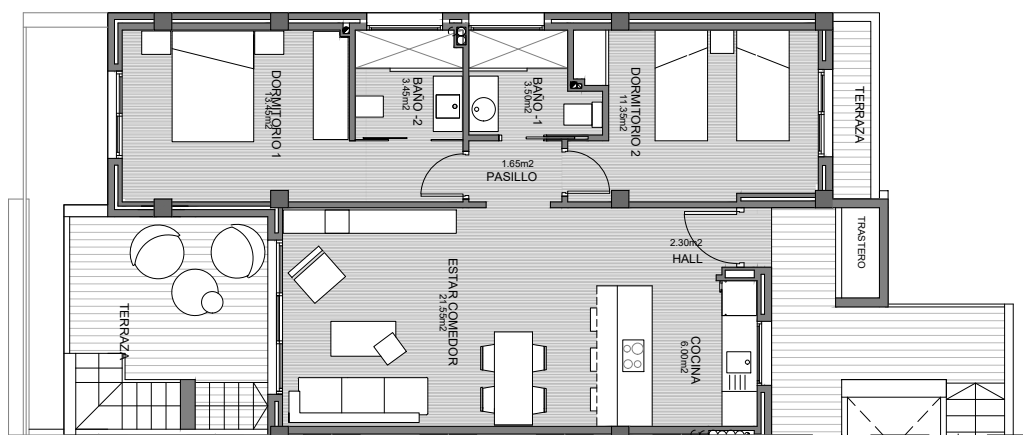


Planta Segunda y Solárium



Biq 04 Nº 66

Superficies (m²)

Vivienda 75,85 *
Terraza 10,16
Balcón 1,90
Trastero 1,50

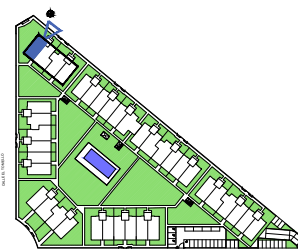
Total_ 89,41
Solárium - 67,32

Sup. construidas *

2 dormitorios

2 baños

Norte



0 1.0 m. 2.0 m. 3.0 m.

Guardamar Del Segura (Alicante)
Parcela ZR-44_Sector Z0-4